



ERHARDT SD

AT A GLANCE

All features of the ERHARDT SD

Maximum dimensions	700 x 400 cm (width x projection length) With Vario-Valance: 650 x 325 cm (width x projection length)
Cassette awning	Fabric and mechanism completely protected
Frame colour	» anthracite grey RAL 7016 str. » grey-aluminium RAL 9007 str. » white RAL 9016 » anthracite DB 703 <small>Any desired RAL colour possible for an additional charge.</small>
Fabric designs	» ERHARDT Ambiente » ERHARDT Classic » Vario-Valance – Soltis Fabric or ERHARDT Screen collection
Inclination angle	5° - 35°
Special features	» Cassette height of only 15 cm » Shading of large areas possible » Vario-Valance available with remote control motor » Can be coupled » High-quality tilting arm bearing

Optional additional features of the ERHARDT SD

- » Motor (optionally available with wireless remote control)
- » Automatic wind and sun control
- » Wireless oscillation sensor
- » Infrared heater (including wireless level control)
- » Awning fabric with welding adhesive technology
- » Vario-Valance
- » With optional valance

For more information, please contact your ERHARDT dealer.



ERHARDT SD



ERHARDT SD

A SLIM DESIGN OFFERING MAXIMUM
PROTECTION

ERHARDT[®]
OUTDOOR LIVING ■



ERHARDT SD THE VERSATILE AWNING FOR EVERY REQUIREMENT

No-one wants problems when they're trying to relax and enjoy their free time on their terrace or balcony in summer – after all, quality time is precious. The ERHARDT SD cassette awning is the perfect choice if you're looking to combine maximum practicality and convenience.

Available in a size of 700 x 400 cm (width x projection length), the ERHARDT SD is exceptionally well-suited for shading large areas. To protect your privacy, avoid prying eyes and create the perfect open-air retreat space, the Erhardt SD is also available with a Vario-Valance. The fabric and entire arm mechanism can be retracted and stored in a fully enclosed cassette to provide lasting protection.

ERHARDT SD

ONE PRODUCT – MANY OPTIONS

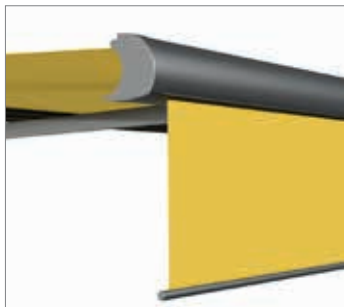


Design

The Erhardt SD cassette awning has an elegant, contemporary look. The awning's innovative design means it fits perfectly into your surroundings, and its compactness makes the ERHARDT SD extremely robust and therefore suitable for larger areas.

Folding arms for maximum load

A robust mechanism in the arm middle joint with a special stainless steel flyer chain guarantees durability, high stability and extreme strength.



Awning with vario valance for more protection

The vario valance with a projection length of up to 160 cm for ideal protection. The vario valance not only gives you perfect sun protection even when the sun is low, but also shields you from prying eyes.

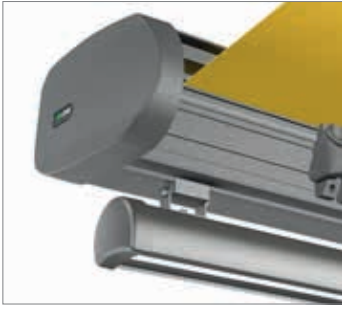
All-round protection for fabric and mechanism

The entire mechanism and the awning fabric shaft are hidden in the cassette awning when in the retracted position. This ensures maximum protection from the elements while at the same time providing an unobtrusive appearance. It also helps the fabric retain its brightness for longer and makes the mechanism more reliable.



Customised angle adjustment

The angle of the awning can be set anywhere between 5° and 35° to give you the exact amount of shade you need for your outdoor area.



Lighting and comfort

The practical lighting rail is attached to the bottom of the awning via special brackets and ensures optimal lighting even in large areas. The brightness can be set to the desired level using simple dimming.

CE Made in Germany

All ERHARDT Markisenbau products are made in Burtenbach, Bavaria. All-round service and continuous production control guarantee high quality.

